

The Design and Development of an E-Learning System Advanced Web Portal for Ground Station

Prof. Priyanka Mane¹, Rahul Patil¹, Tejas Nemade²

Department of Information Technology Engineering, Genba Sopanrao Moze College of Engineering Balewadi, Pune-411045, Maharashtra

ABSTRACT

Satellite connectivity enables a high-quality classroom experience for students. In today's world of technology, eLearning has emerged as a powerful tool that is transforming education.

The significance of eLearning, focusing on its flexibility, accessibility, personalized learning experiences, cost-effectiveness, and global reach. In our rapidly changing and interconnected world, technology has ushered in a new era of living, working, and learning.

Web Portals Are Transforming Into Digital Experience Platforms

A portal is a web-based platform that collects information from different sources into a single user interface and presents users with the most relevant information for their context. A static website is a type of website built using only HTML, CSS, and JavaScript and. These components include front-end, back-end, APIs, databases, microservices, and UI/UX designs., etc.

Keywords: web development, moodle, php, mysql

INTRODUCTION

e-learning is the use of technology to enable people to learn anytime and anywhere. It includes training, the delivery of just in time information and guidance from experts. It includes all forms of electronically supported learning and teaching. The information and communication systems, serve as specific media to implement the learning process. E-learning is the computer and network-enabled transfer of skills and knowledge. The content is usually delivered via internet. It involves both out of classroom and in classroom training mostly with the aid of internet based technologies (IBT) or web based technologies [WBT].

Satellite communication if incorporated with the existing technology and teaching methodologies would prove extremely beneficial to make e-learning more approachable to the mass, both in the urban as well as rural areas.

This unit will take you through the development of satellite education. The focus is on the satellite, and its types. It will present the experiences of the use of satellite in education emphasizing the various experiments of use of satellite in education in India and in the developed and developing countries. The experiments described are not the only experiments, but a few important ones are described.

“Design and Development of satellite portal to support adaptive e-learning”. The thing of this design is to produce a web portal that helps scholars to learn on an online platform and perform instrument courses.

LITERATURE REVIEW

E-learning is web-based training delivered via the internet. This web portal helps the students to develop their self-skills and self-directed learning and perform courses online. Students have remote areas participation in the learning process plays an important role in rates in online learning which helps to enhance their knowledge.

E-learning based on php and moodle framework technologies involves it is an open source of php and less cost and has become an effective learning program due to its flexibility, freedom for its usability when the student uses this web portal it increases their knowledge in a broader view point.

The technology can continue to change the world of economy as well as continue to revolutionize teaching and learning in students' activities. Moreover, this portal includes gathering information of students to track student activity and analyze course completion rates and provide personalized feedback to instructors and administrators. Automated emails and

notifications are also sent to students and instructors for assignments, announcements, and updates. The system can be integrated with other systems, such as a student information system or payment gateway, to streamline administrative tasks and provide additional functionality

III. TECHNOLOGY USED

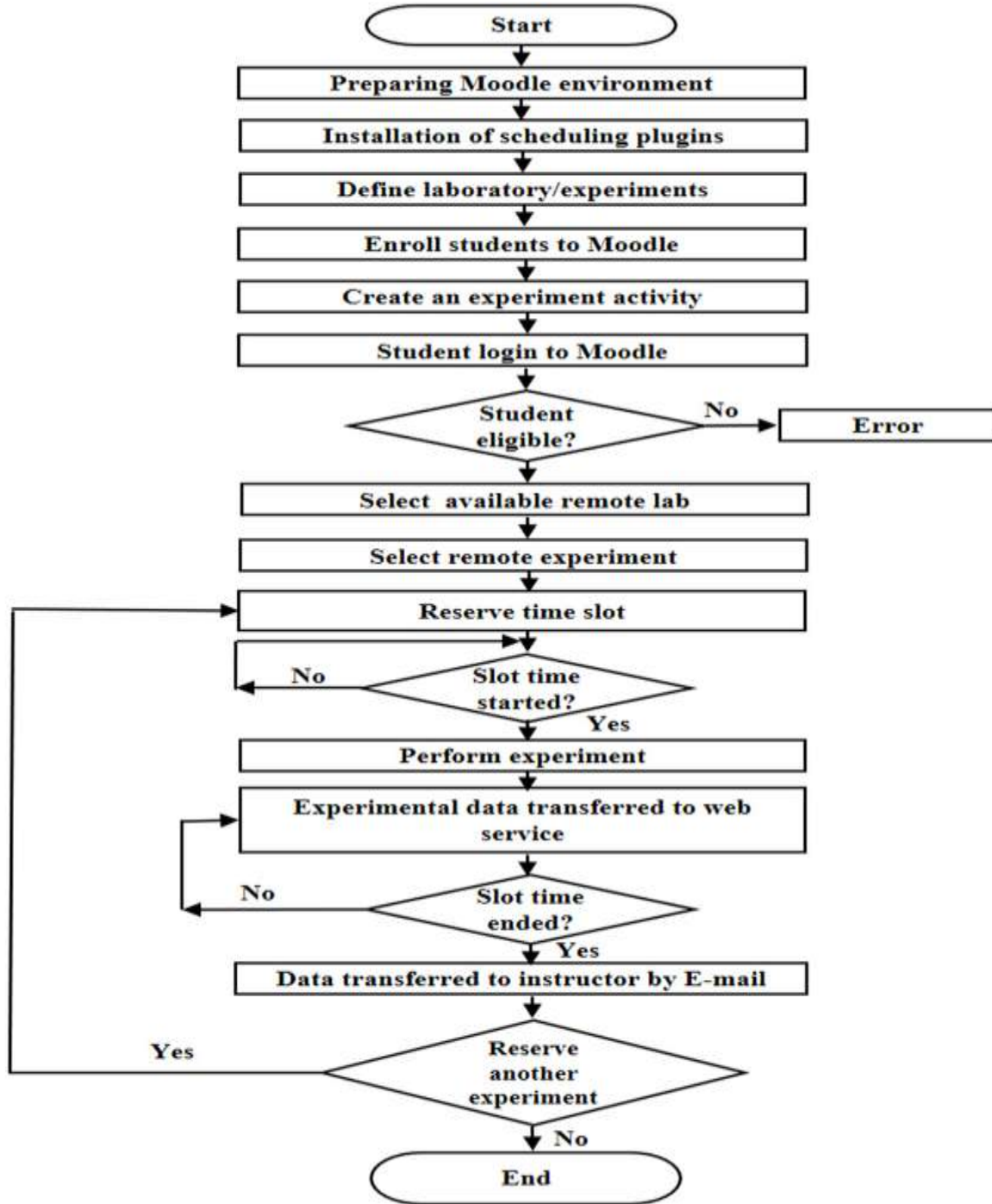
- Frontend: The goal of designing a website that it is must be ensure the user interface should user friendly easy to understand for students
- HTML CSS Bootstrap
- PHP MYSQL
- Moodle is a Learning Management System (LMS) designed to provide educators, administrators and learners with a single robust, secure and integrated system to create personalised learning environments.

EXISTING SYSTEM

- **Existing System of E-learning Management System:**
- In the existing system the exams are done only manually but in proposed system we have to computerize the exams using this application.
- Lack of security of data.
- More man power.
- Time consuming.
- Consumes large volume of pare work.
- Needs manual calculations.
- No direct role for the higher officials

Proposed System of E-learning Management System:

- The aim of proposed system is to develop a system of improved facilities. The proposed system can overcome all the limitations of the existing system. The system provides proper security and reduces the manual work.
- Security of data.
- Ensure data accuracy's.
- Proper control of the higher officials.
- Minimize manual data entry.
- Minimum time needed for the various processing.



CONCLUSION

- The internet will continue to connect people around the globe and cause instability in areas where people have limited resources ...It has become a global means of communication in our everyday lives.
- a satellite completely dedicated for educational sector it can connect the people to people and increasing the demand of e-learning and education institutions to deliver e-learning,
- already done in the area.
- Made statement of the aims and objectives & a description of Purpose, Scope, and applicability.
- fine the problem on which we are working on E-learnig it describe the requirement Specifications of the system and the actions that can be done on these things. Finally the system is implemented and tested according



REFERENCES

- [1]. Nichols, M. (2007). "E-learning in context"
- [2]. Kalantzis, Mary and Bill Cope. 2015. "Learning and New Media." Pp. 373-387 in The Sage Handbook of Learning, edited by D. Scott and E. Hargreaves. Thousand Oaks CA: Sage. | download
- [3]. M. Garg and M.K. Jindal, "Edusat- e-learning through satellite- reaching the unreached", Int. J. Recn.Tren. Eng., vol 1, No. 2, May 2009.
- [4]. R.Balajee, "Digitizing the Indian cable tv – on i.p.", [tp://www.scatmag.com/technical/techarticle_oct05.pdf](http://www.scatmag.com/technical/techarticle_oct05.pdf)
- [5]. Urdan. T., Weggen, C. (2000) Corporate E-Learning: Exploring a New Frontier: <http://www.spectrainteractive.com/pdfs/CorporateELearningHamrecht.pdf> (Accessed on 3 April 2006.
- [6]. Hall, B. (2000). New study seeks to benchmark enterprises with world-class elearning in place. Elearning, 1 (1) 18 - 29.